

**Join the International Society of  
Acrylic Painters celebrating its  
FOURTH OPEN ON-LINE  
INTERNATIONAL EXHIBITION  
Gallery posted on ISAP-online.com  
Date to be announced**

*This International Exhibition is open to all artists over the age of 18 and working in the acrylic medium on any surface. Juror for the event is Marilyn H. Phyllis, AWS. This is an opportunity for all Acrylic Artists who work in all sizes but especially in very large formats where shipping to shows is financially stressful. This show will be permanently archived on the ISAP website. ISAP entrants and members have a significant reputation in the art collecting community with galleries and buyers actively checking this website. The overall scope of the Society is very diverse representing a wide range of subject matter and styles.*

**Only digital entries in jpeg format may be submitted on line to Juried Art Services (JAS). JAS provides comprehensive user support to entrants. Use JAS link at [www.isap-online.com](http://www.isap-online.com).**

**Entry fee: \$46 (US currency) for up to two works, paid through Paypal. Although 2 jpeg entries are permitted per artist, only one work will be selected. Notification of acceptance will be sent via email. Participants may check the ISAP website after April 18 for the list of accepted entrants.**

**FOURTH OPEN ON-LINE  
INTERNATIONAL EXHIBITION  
2012**

**January 2, 2012 - March 15, 2012** - Submit digital files to ISAP via Juried Art Services ([www.isap-online.com](http://www.isap-online.com))

**April 18** - Notifications of juror's acceptance begin via email.

**Gallery posted on-line** - Date to be announced.

**Awards:** Best of Show, \$500 Second \$300, Third \$200. Material awards can be expected from many of our current art supply sponsors. Cash prizes may also increase. Prospectus, due dates, and additional info is also posted on the ISAP website: [www.isap-online.com](http://www.isap-online.com).

**Terms and Conditions:**

All work must have been created in the past three years and not exhibited in any other ISAP show (including any other ISAP On Line Shows). Participants must be at least 18 years old. The image must be 80% acrylic on any 2-D surface including wrapped canvas. Selected works will be exhibited on our website. Work does not have to be for sale and may even be already sold! The minimum size for entries is 9"x12", NO maximum size. Selected entries will earn ½ point towards Signature Membership in ISAP with 1 full point required, OR, entry into the one physical show held each year (Paso Robles, California in 2012).

Entering your work is subject to the conditions of the exhibition. You are consenting to having a reproduction of your work used for promotion of the show as well as having your work, if chosen, archived on the ISAP website as an inclusion in the 2012 Fourth Annual ISAP Open On Line International Exhibition. You are confirming that the work entered is your own and that not any copyrighted images incorporated in your work have been used. (Please consider that identifiable collage imagery may be copyrighted; if collage is an element in your work, it should not exceed 20% of the finished piece.)

Since there will be no shipping of actual art work to a physical gallery or show site, ISAP will rely on your integrity to send only work that is 80% in the acrylic medium which follows the parameters mentioned for consideration of inclusion in this show. Any requests for an artist's information, as well as queries regarding sales, will be directly forwarded to the artist for responses. No commissions are required but a donation to ISAP is encouraged if a sale results from the show.

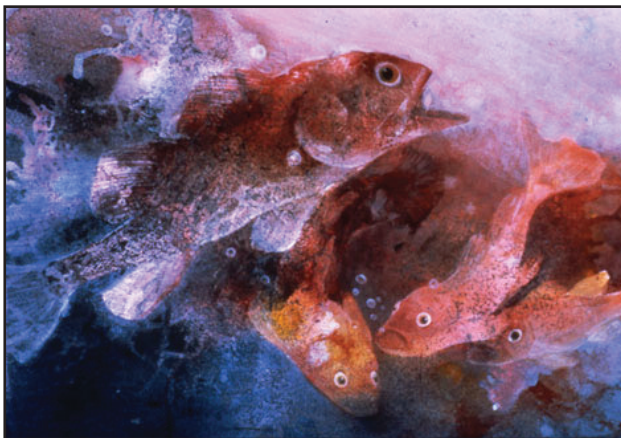


**The International Society  
of Acrylic Painters**

***Issues a Call for  
Entries to the  
2012 Open  
On-line Exhibition***

**Marilyn  
Hughey Phyllis**  
**Exhibition Juror**





**Fin and Frolic**

Image Size: 14.5" x 19.5" (37 x 50 cm.)

Collection of Mr. and Mrs. Edward W, Stifel, Jr.

Meaning: This was a playful experiment in the use of various materials to achieve textual effects.

In it's early stages it was not meant to be more than that. But soon it suggested fish images which were further developed into the final painting.

*Watercolor, ink, acrylic, gouache, and tempera on Crescent No. 114 cold press watercolor board*



**Grand Finale**

Image Size: 30" x 40" (76 x 101.5cm.)

Collection of Dr. and Mrs. Ruben G. Plaza.

Meaning: Parallel universes and multiple visions fascinate me. Seeing through from one image to another expands our minds and vision.

*Watercolor, acrylic, gouache*

## **Marilyn Hughey Phillis** **Artist, Author, Lecturer**

Marilyn Hughey Phillis, whose background is in both art and science states, "Every painting is an adventure in the search for truth and beauty through the use of color, form and light. I am always looking beyond the surface to the depiction of the human response to nature. It is not just what the eye sees, but what the soul senses, that I find important, and the statement I want to communicate in my work."

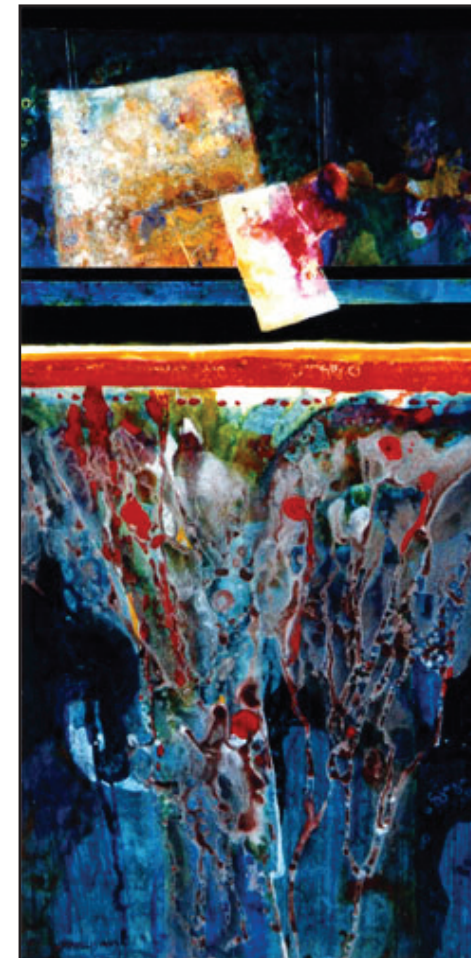
Known for her expressive watermedia paintings ranging from representational to cosmic abstraction, Marilyn Hughey Phillis has served as juror for many major national and regional juried exhibitions.

Marilyn is widely known for her inspiring lectures and creative watermedia, collage, and healing arts workshops throughout the United States.

The author of the best selling 1992 Watson Guphill book, *Watermedia Techniques for Releasing the Creative Spirit*, has also had work included in five other books and several periodicals in the U.S., England, and China.

Jacqueline Hall, Art Critic for the Columbus Dispatch (Ohio) comments that the artist "gives viewers fleeting suggestions rather than definite representations. She offers subtly tinted amorphous masses, which take on different shapes and meanings, according to eyes, mind, and emotions."

Phillis, an Ohio native, currently living in Wheeling, WV, may be contacted for workshop or jurying information at 72 Stamm Circle, Wheeling, WV, 26003. (304) 242-6831. e-mail: mhphillis@aol.com.



**Primordial Transition**

Image Used for Cover of SUBTLE ENERGIES and Energy Medicine Journal, Vol. 16, No. 3 2006.

Image Size: 29.5" x 14.5" (75 x 37 cm.)

Collection of Ohio University  
Perm. Collection, Lancaster Campus.

Meaning: Using visually symbolic and abstract forms representing life evolving from primordial soup, cosmic and earthly life is portrayed by a change to geometric form as intelligent life developed bringing order and chaos to the earth. The whole becomes greater than its parts. The interdependence and interaction of the Universe is constantly and creatively present.

*Acrylic, collage, gouache*