



Volume 2 #1, Summer 2001

WELCOME

To the first issue of our new newsletter! It is our hope that you will make this one of your pipelines to and from NAPA USA, a way to keep in touch with what is happening in the world of acrylic artists and a way to get to know your fellow members from around the world. The other pipeline we hope you will find useful is our new website, www.napa.org (still in creation).

This issue will be a recap of recent activities, some member news and upcoming events. In order to make it easier to read I have elected to use a clear format in fairly large print. Nothing is harder to keep up with in our busy lives than newsprint too hard to read quickly. Are you as guilty as I am of trying to get the news by scanning the headlines? We do hope to give you some reason, however, to read the whole article!

Evelyn Peters ...Newsletter/ Website Director

IN THIS ISSUE

Member News	3
NAPA Personnel Needs	2
NAPA 2000 Exhibition	2
Obtaining Signature Status	4
Santa Fe Profile	3
This and That	3
Upcoming Exhibitions	1

NAPA'S AIM

IS THE ENCOURAGEMENT OF
BUDDING ACRYLIC ARTISTS
TO KEEP PAINTING WITH
A FOCUSED GOAL.

EXHIBITION NEWS

Because of schedule conflicts our busy Director Linda Gunn simply did not have time enough to organize an international Exhibition for 2001. HOWEVER, THERE IS A NAPA Membership Exhibition this summer in the UK. A prospectus will be forthcoming for the exhibition to be held in Wales at the Blacksheep Gallery. ...And Linda reports this exciting news:

NAPA USA's 2002 Exhibition will be held in Santa Fe, New Mexico (just down the road from your editor, well, 200 miles is down the road in New Mexico!). Santa Fe is home to The Artisan Art Supply and they will be having their second three-day ART EXPO on August 23-25, 2002. This is a trade show with free demonstrations and hands on workshops. NAPA's EXHIBITION WILL BE A PART OF THIS BIG EVENT! Segreto Gallery of Contemporary Art will be our host for two weeks. Lorraine Strieby just returned from a visit to this gallery, which is located next to the oldest church in the U.S. (see related article, pg.3) and she reports the gallery has space enough to hang about 60 paintings. Our juror will be Mary Alice Braukman, who will be teaching several workshops as well as announce the awards at the opening reception on August 23. You may view Mary Alice's work in the Spring issue of *Watercolor* magazine. Also mentioned were NAPA members Dawn Quinones, Audry Suer and Gerry Willging.

NAPA 2000 Exhibition Recap



Linda S. Gunn, NAPA USA Director

Our 2000 Exhibition at South East Louisiana University was impressive. People were amazed that all seventy-five paintings had been painted in acrylic. Due to a lack of funds, not all of the paintings were pictured in the catalog, and much to my dismay in my editing of this year's catalog I overlooked two NAPA USA exhibitors, Joyce Patrick and Evelyn Peters. Evelyn, our new newsletter editor, had one of her paintings selected to appear on the Exhibition Announcement. These were mailed to all the people on the LSU mailing list. My apologies for this oversight. A photo of Evelyn's painting, *Night Gossips* (based on an actual rock formation), appears below.



The National Acrylic Painters Association of Great Britain presented NAPA USA's Fifth International Open Exhibition, June 9—July 21, 2000, at South East Louisiana University Gallery, Hammond, Louisiana. Alan Flattmann was the juror.

*Thanks to all who contributed to this newsletter,
And a Special Thanks to
William A. Motta
for the Newsletter Logo idea.*

✻ HELP WANTED ✻

ADVERTISING DIRECTOR

DUTIES: Placing advertisements in magazines and other news media.

The job also involves gathering show awards from art magazines, art material marketers, and local retailers. This information will be forwarded on to the Catalog Director.

Thank you notes with a copy of the catalog to all sponsors is also part of the duties.

✻ HELP WANTED ✻

CATALOG DIRECTOR

DUTIES: This Director's job is to organize the exhibition catalog. Duties include scanning slides, setting up the photos and the advertisements, and compiling a listing of the exhibitors and the titles of their works. All of this will make up the finished catalog which when compiled will be put on a disk and sent to a printer.

This is a great project for any computer class. Do you teach computer?

MEMBER NEWS

Do you have something exciting happening in your art life. Let us know your news.

For instance:

Nan McCarthy of Hillsboro, New Hampshire won a place in the highly competitive international juried exhibition "Realism 2001" at the Stage Gallery in Merrick, New York with her acrylic painting "Dahlia". It was one of only 26 pieces selected to be shown from over 2000 works submitted by artists from all over the world. The pieces for the exhibition were selected by invited guest curator, Peter Tatistcheff, who is the distinguished owner/director of the Tatistcheff Galleries in New York City and a well-known specialist in contemporary realist art. The show dates were March 2 through April 8, 2001.

Then in the May 2001 issue of *Southwest Art*, M. Diana Pace is profiled in the "Artists to Watch" section. Her painting "Ashwani's Gold Rose" is depicted and it is obvious why this artist is receiving acclaim.

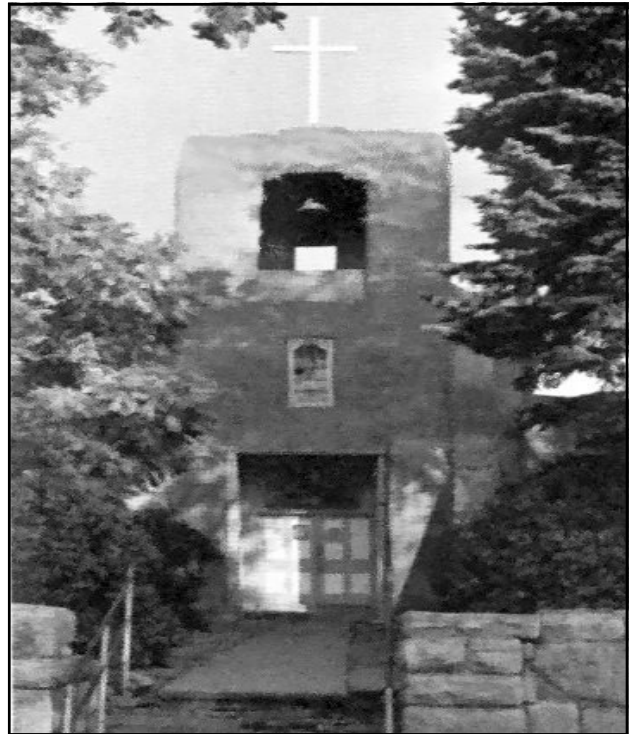
THIS AND THAT

As previously mentioned, NAPA USA is in the process of developing a new website which will be the perfect venue for you to relate your workshop information, to tell us of your exhibitions and major awards and a place to submit your articles. I know some of you have tips and tricks to relate.

For instance, what do you do about fly away hairs on your synthetic brushes? You know when your brush will no longer keep a point. Well my solution is to dip the brush into water that is just barely at the boiling point. I hold it there with the bottom of the ferule just under the water until the hairs relax and spread outwards. At this point I take the brush from the water and roll the end on a paper towel, much as you would to shape a point when you are painting. At this time the brush is probably too hot to shape with your fingers. Then I lay the brush flat to dry.
...Ye Ed.

Santa Fe — "THE CITY DIFFERENT"

Santa Fe, the capitol of New Mexico, is the oldest seat of government in the United States. It was settled by Europeans in 1610, however, ancient ruins have been uncovered indicating that it might have been settled by Indians some 400 years earlier.



San Miguel Church

The Oldest Church in the U.S.A. is next door to the Segreto Gallery of Contemporary Art which is at 225 East DeVargas in downtown Santa Fe. The Segreto will be the location of the NAPA 2002 USA Exhibition. Santa Fe, a town of about 150,000, is at an elevation of 7,000 feet above sea level located in the foothills of the Sangre de Cristo Mountains. Nearby peaks are as high as 12,000 feet. The climate is high desert, intense sunlight, very dry, sometimes less than 20% humidity. A sunscreen and hat are advisable year around. Nights and early mornings are cool, even in July and August. Most tourist attractions are within walking distance of downtown hotels and there are 15 city-owned parking lots in the downtown area.

nacpa
NATIONAL ACRYLIC PAINTERS' ASSOCIATION
134 RAKE LANE, WALLASEY
WIRRAL L45 1JW, UK

**EXHIBIT YOUR PAINTINGS IN
GREAT BRITAIN
AS WELL AS IN THE USA**

NAPA USA IS LOOKING FOR NEW MEMBERS!
**Membership is obtained by simply joining the
NATIONAL ACRYLIC PAINTERS ASSOCIATION**

Phone: 562-439-3276 Fax: 562-597-3750

**TO BECOME A SIGNATURE MEMBER ANY ARTIST MAY SUBMIT *THREE SLIDES* TO NAPA USA
FOR SANDY CARPENTER, EDITOR OF *THE ARTISTS* MAGAZINE
TO JURY BY *NOVEMBER 1* EACH YEAR.**

**ARTISTS HAVE THREE OPPORTUNITIES A YEAR TO TRY FOR SIGNATURE
MEMBERSHIP. THEY MAY SUBMIT SLIDES FOR JURY (AS ABOVE) OR SUBMIT
SLIDES AND BE ACCEPTED INTO ANY NAPA JURIED EXHIBITION IN THE
USA OR GREAT BRITAIN**

**NAPA MEMBERSHIP
CHAIRPERSON
LORRAINE STRIEBY
P. O. Box 4928
Chatsworth, CA 91313-4928
Annual Dues: \$40**

**SEND NEWS & ARTICLES TO:
EVELYN PETERS
3706 SAN MEDINA AVENUE
FARMINGTON, NM 87401
petersart@sprynet.com
[http:// www.napa-usa.org](http://www.napa-usa.org)**

**NAPA USA DIRECTOR
LINDA S. GUNN
Honorary President
GERALD BROMMER
Honorary Vice President
SANDRA CARPENTER**

nacpa USA

2525 E. 5th Street
Long Beach, CA 90814